

UNIVERSITY OF OREGON  
**OREGON BACH FESTIVAL**

CPC Check-In Preview  
November 10, 2015

HACKER



## LARGE SCALE CAMPUS

Campus Trees  
Good Neighbor  
Main Gateways  
**Open-Space Framework**  
Open University  
Outdoor Classroom  
**Sustainable Development**  
**Universal Access**  
**Welcoming To All**

## TRANSPORTATION

Bike Paths, Racks, And Lockers  
**Local Transportation Area**  
Looped Local Roads  
Paths And Goals  
Pedestrian Pathways  
Peripheral Parking  
Shielded Parking And Service Areas  
Spillover Parking  
Road Crossings

## SITE ARRANGEMENT

Activity Nodes  
**Building Complex**  
**Connected Buildings**  
Existing Uses / Replacement  
Family Of Entrances  
Main Building Entrance  
Positive Outdoor Space  
Public Outdoor Room  
**Quiet Backs**  
Seat Spots  
**Site Repair**  
Sitting Wall  
**South Facing Outdoors**  
Tree Places  
**Use Wisely What We Have**

## BUILDING DESIGN

Four-Story Limit  
**Architectural Style**  
**Operable Windows**  
**Flexible and Longevity**  
**Future Expansion**  
**Wholeness of Project**  
**Wings of Light**  
**Quality of Light**  
**Organizational Clarity**  
**Building Hearth**  
Office Connections  
Public Gradient  
Fabric of Departments  
No Signs Needed  
Faculty-Student Mix  
Places to Wait  
Enough Storage  
Building Character and Campus Context  
Arcades  
Pools of Light  
Materials and Operations

History and Identity

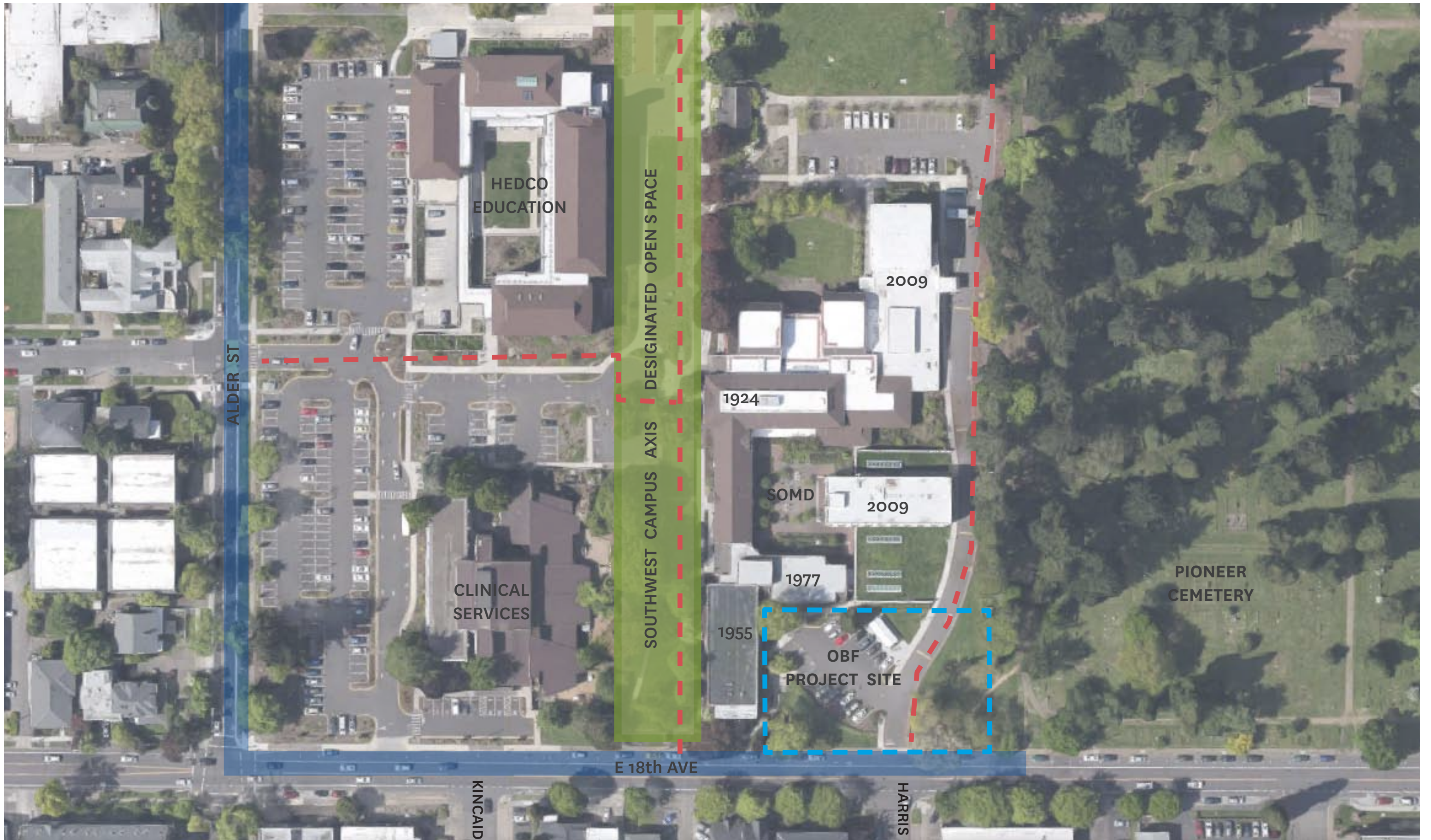
Gateway to Campus

A Front Door

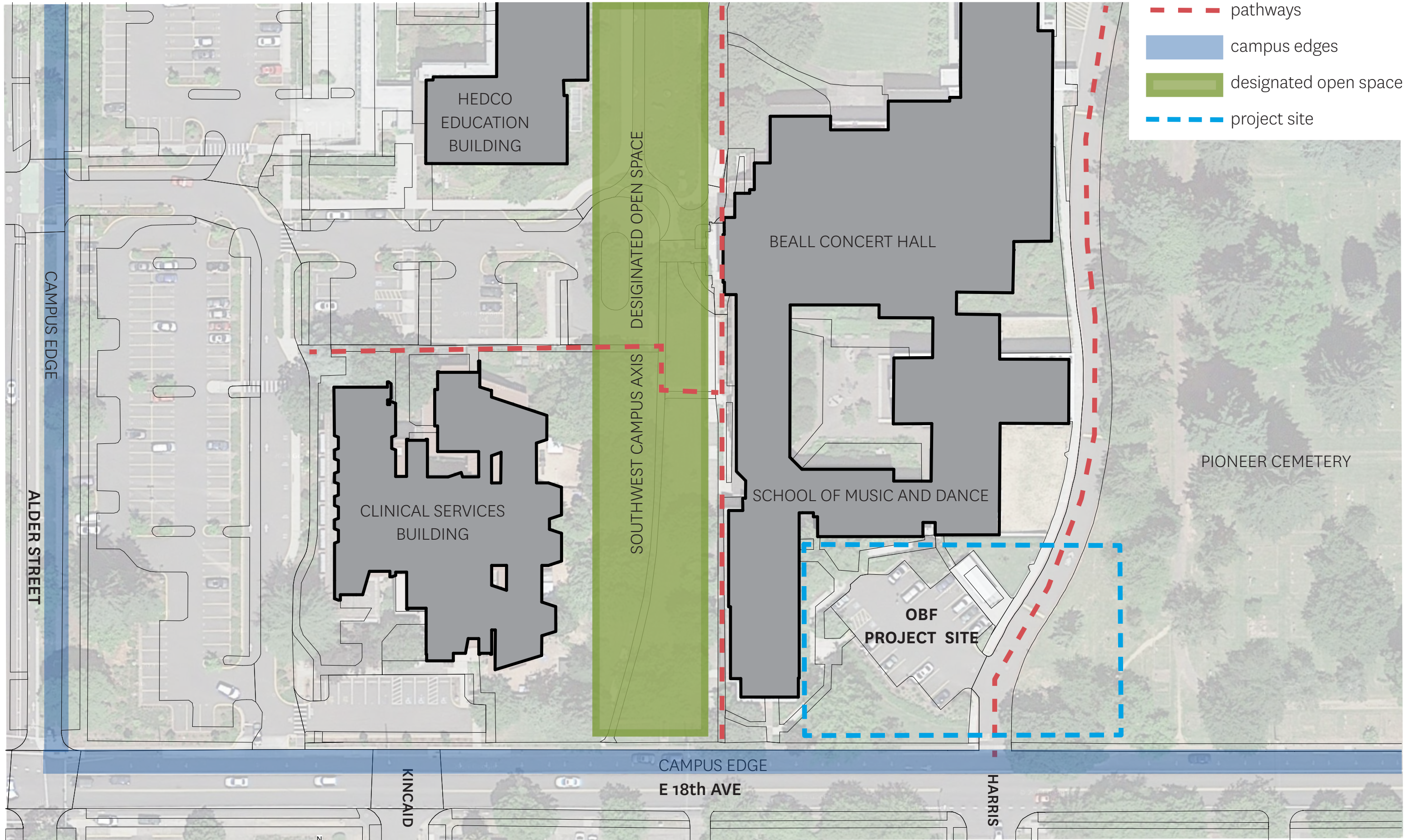
Series of Outdoor Courtyards

A Building Within a Building Within a Complex

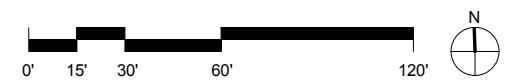




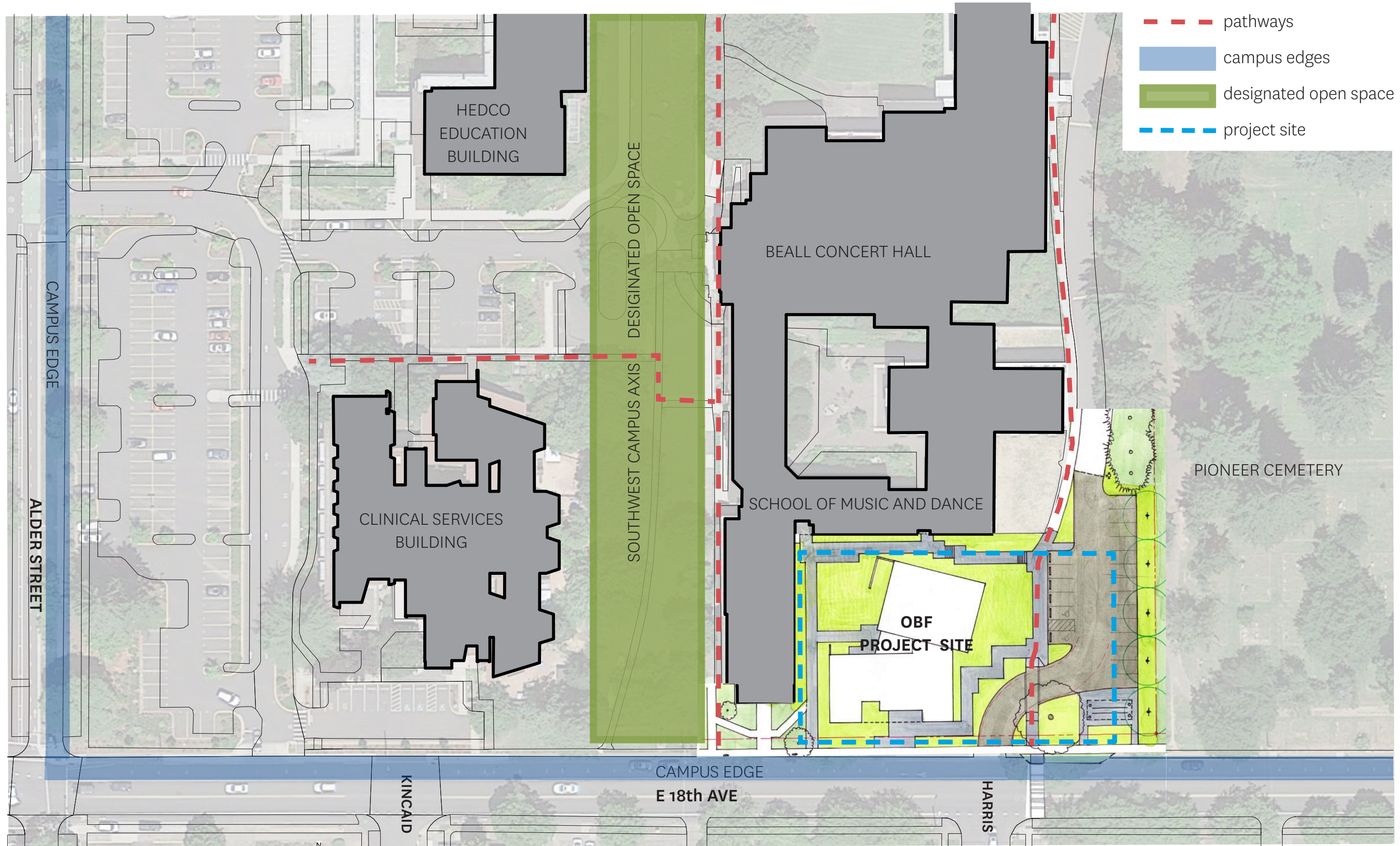




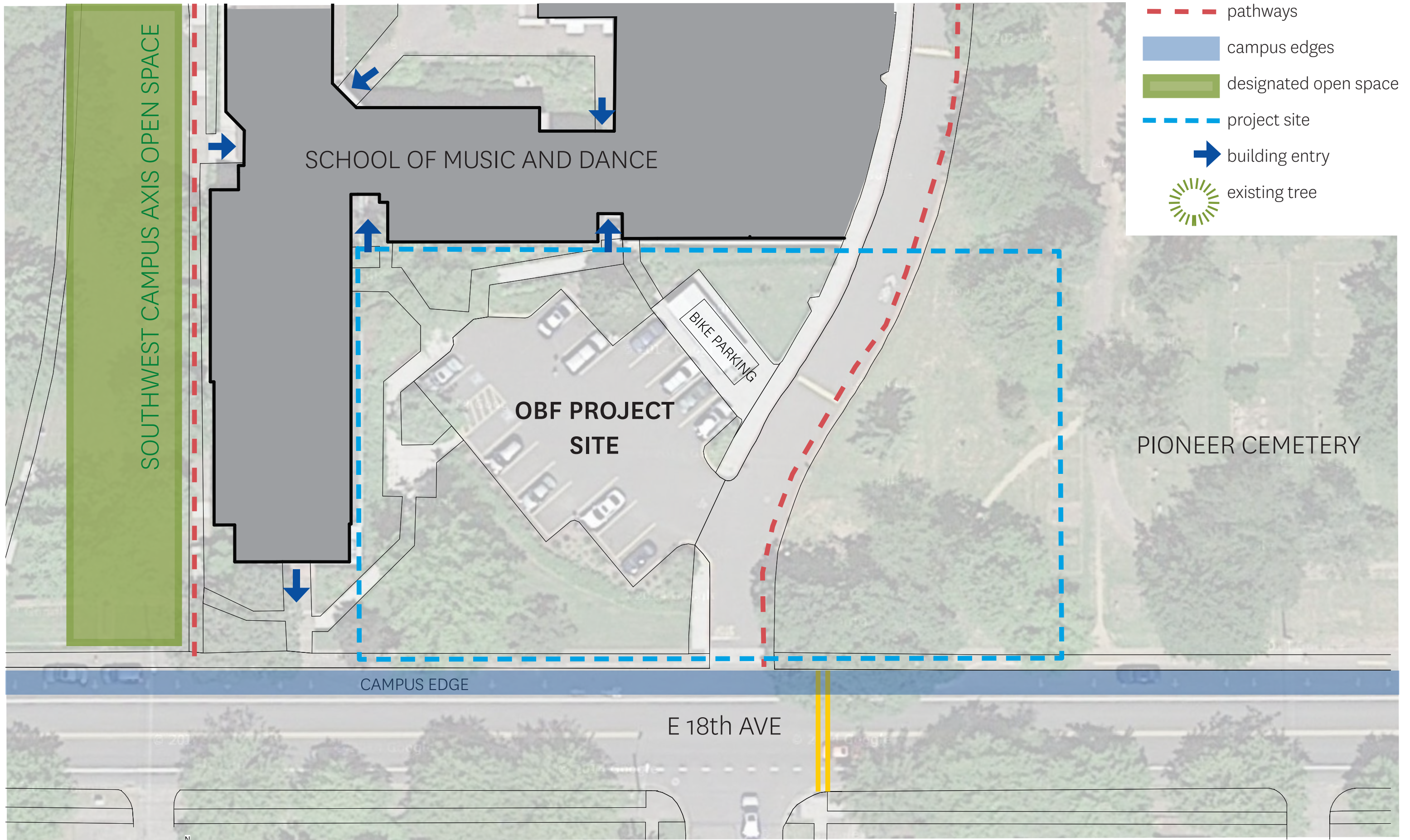
- pathways
- campus edges
- designated open space
- project site



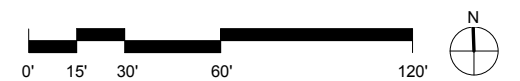




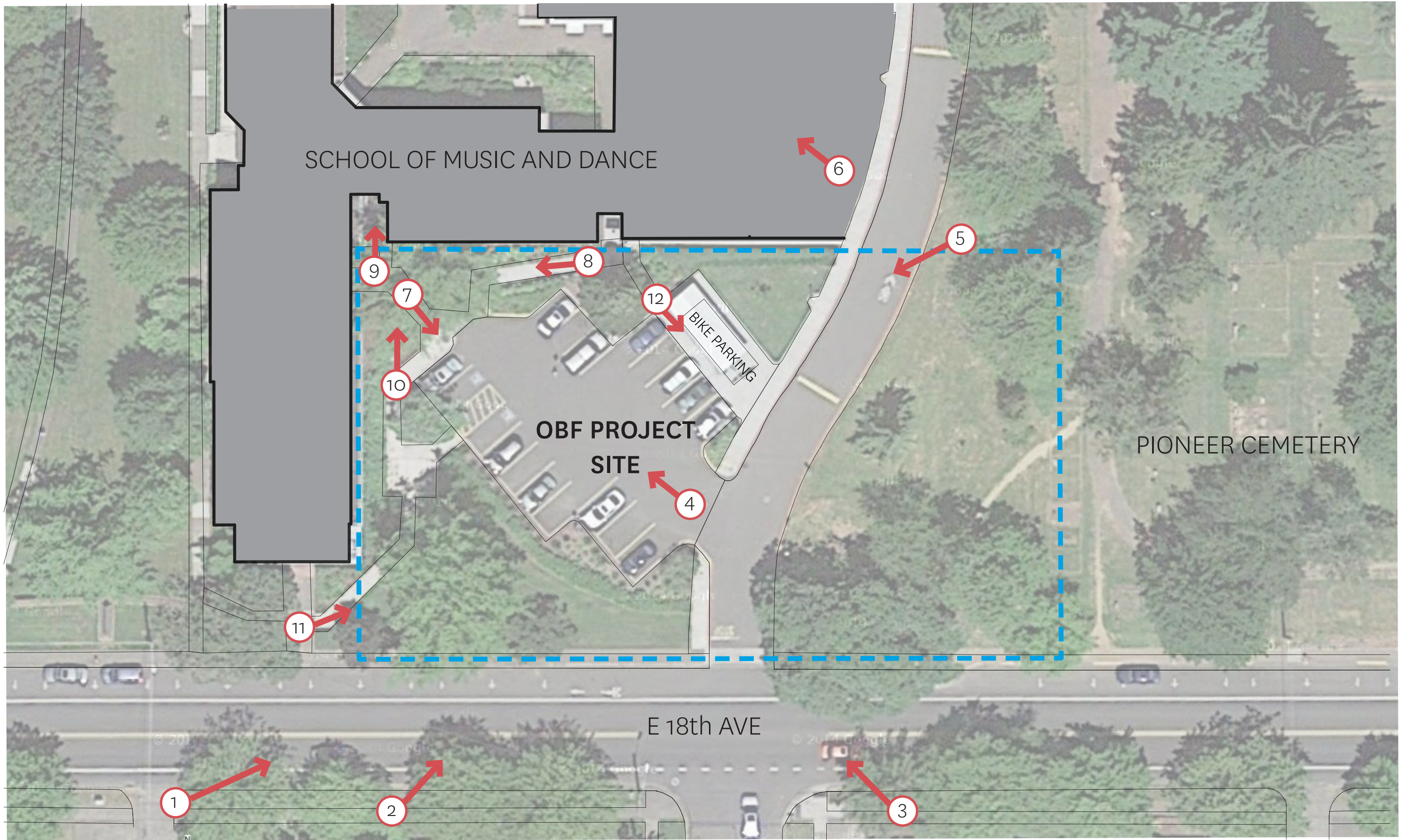




- - - pathways
- campus edges
- designated open space
- - - project site
- ➔ building entry
- ☀ existing tree







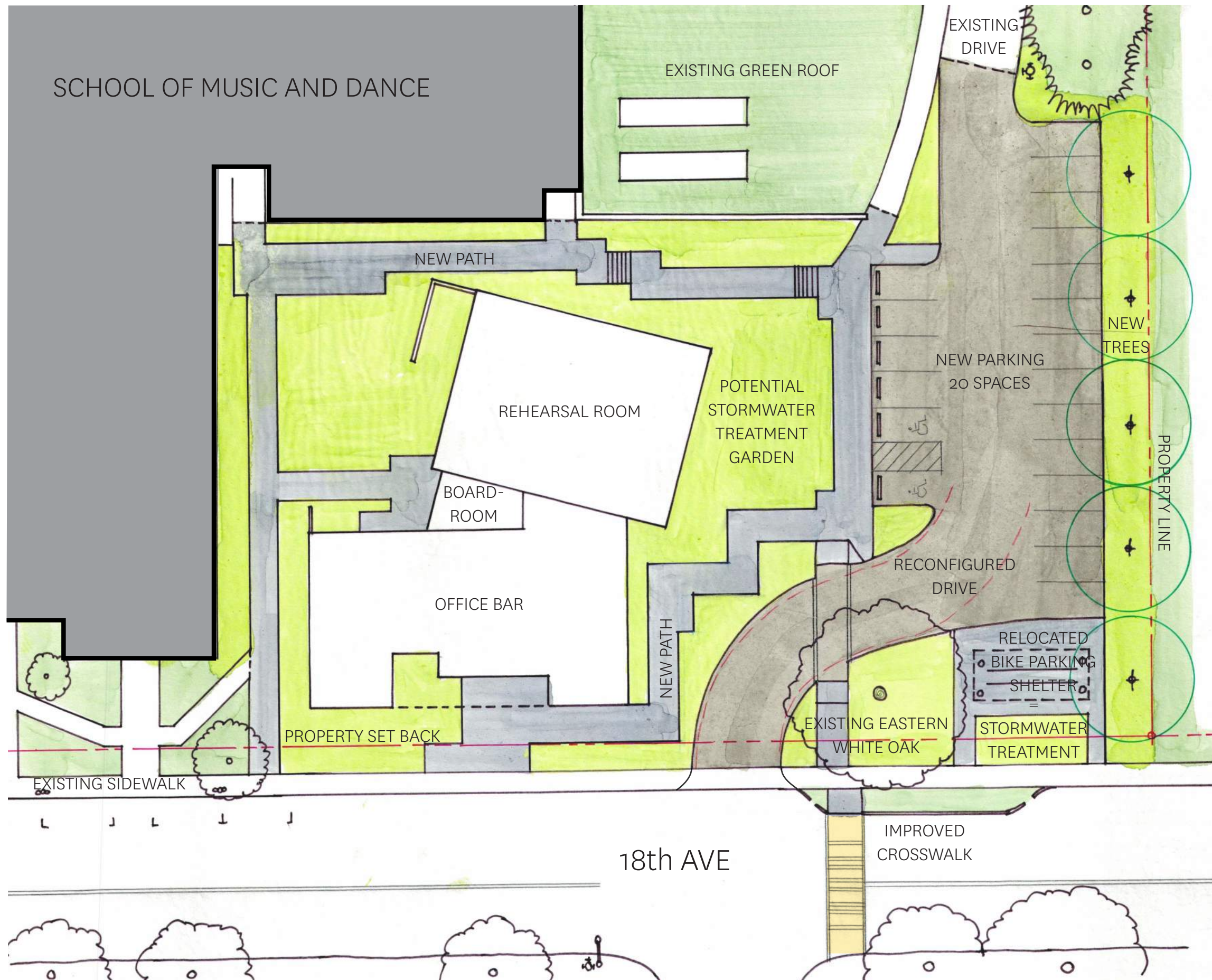








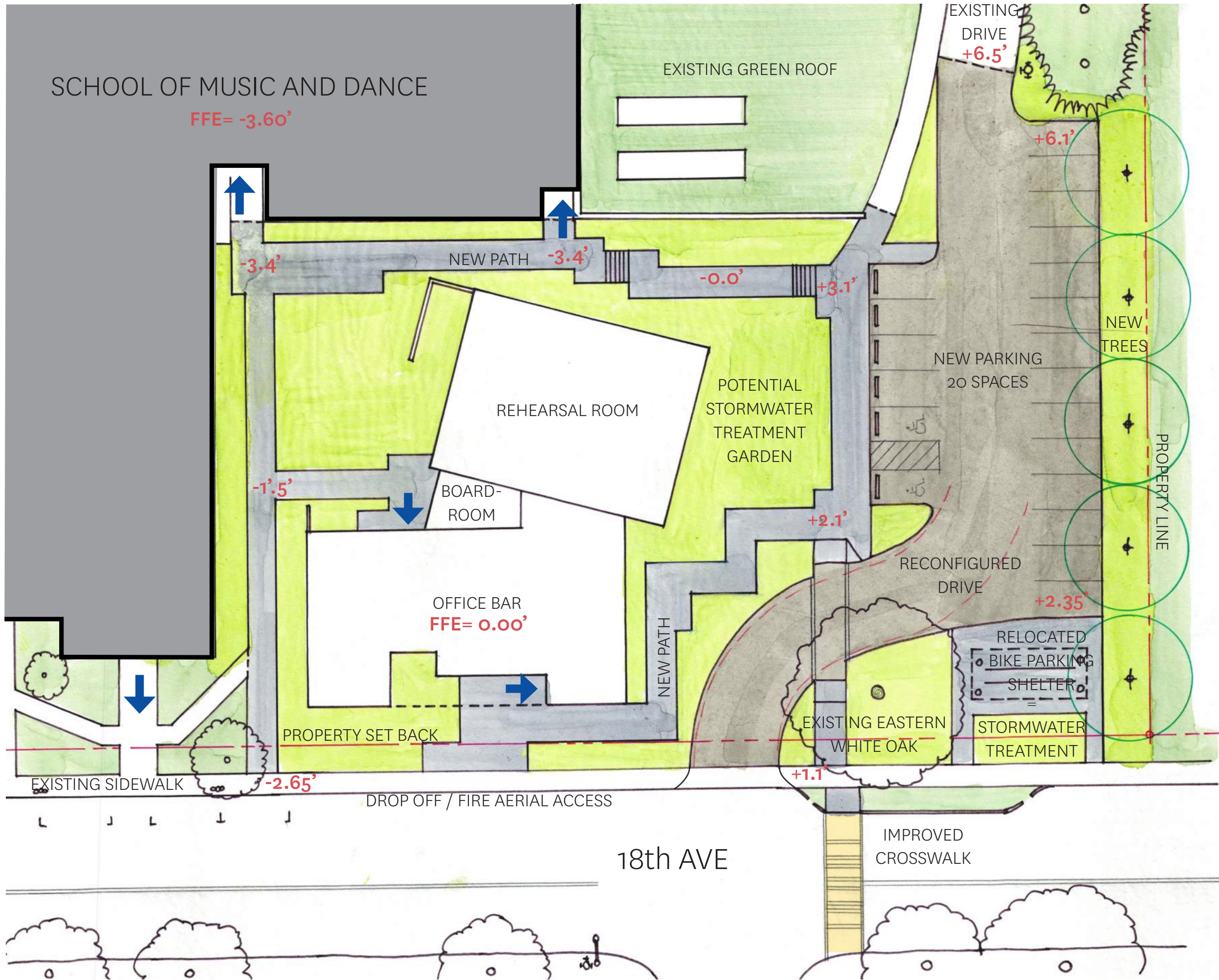




## SKewed REHEARSAL ROOM

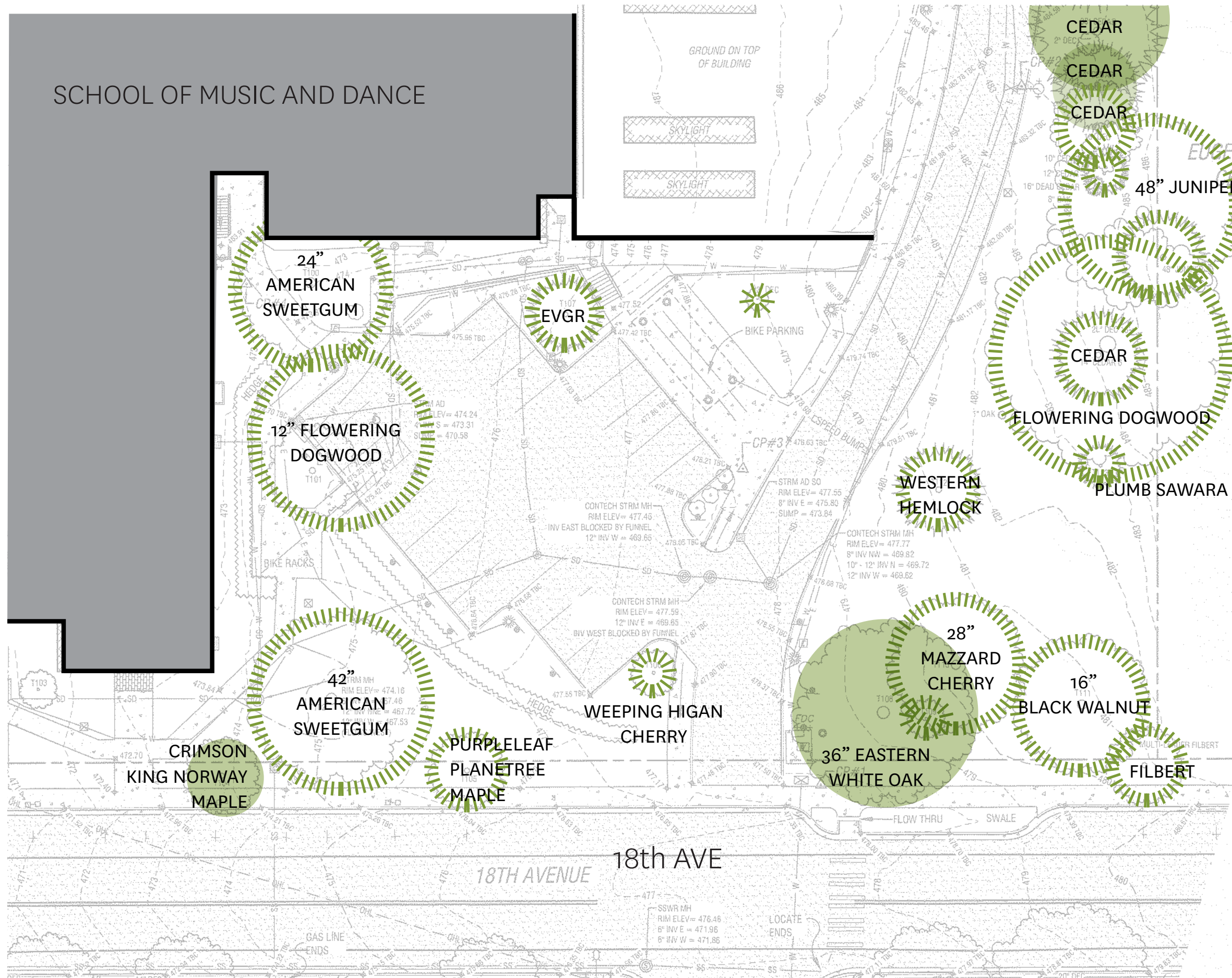
- Provides for more site area to make the elevation transition from ADA parking to the east on site to the OBF entry. Allows for slightly flatter slopes, grades are challenging on this site.
- It allows for a more direct (better way finding) views and route from the main north/south path, down the stairs, to SOMD mid-entry door. It also provides better way finding and view to the SOMD mid-entry for the universally accessible west path from 18th.
- Skewing provides more area in the northwest 'courtyard' at the SOMD corner entry.
- Allows for better grading of walks heading toward SOMD mid-entry.
- Provides more landscape area for potential storm water treatment of the OBF roofs.
- Provides slightly better solar access into the NW courtyard.
- More easily allows for a separate small court along the west side of the performance building in addition to the more 'public' NW courtyard.
- Skewing creates a stronger indoor / outdoor relationship at the nexus (boardroom) between performance hall and office wing.





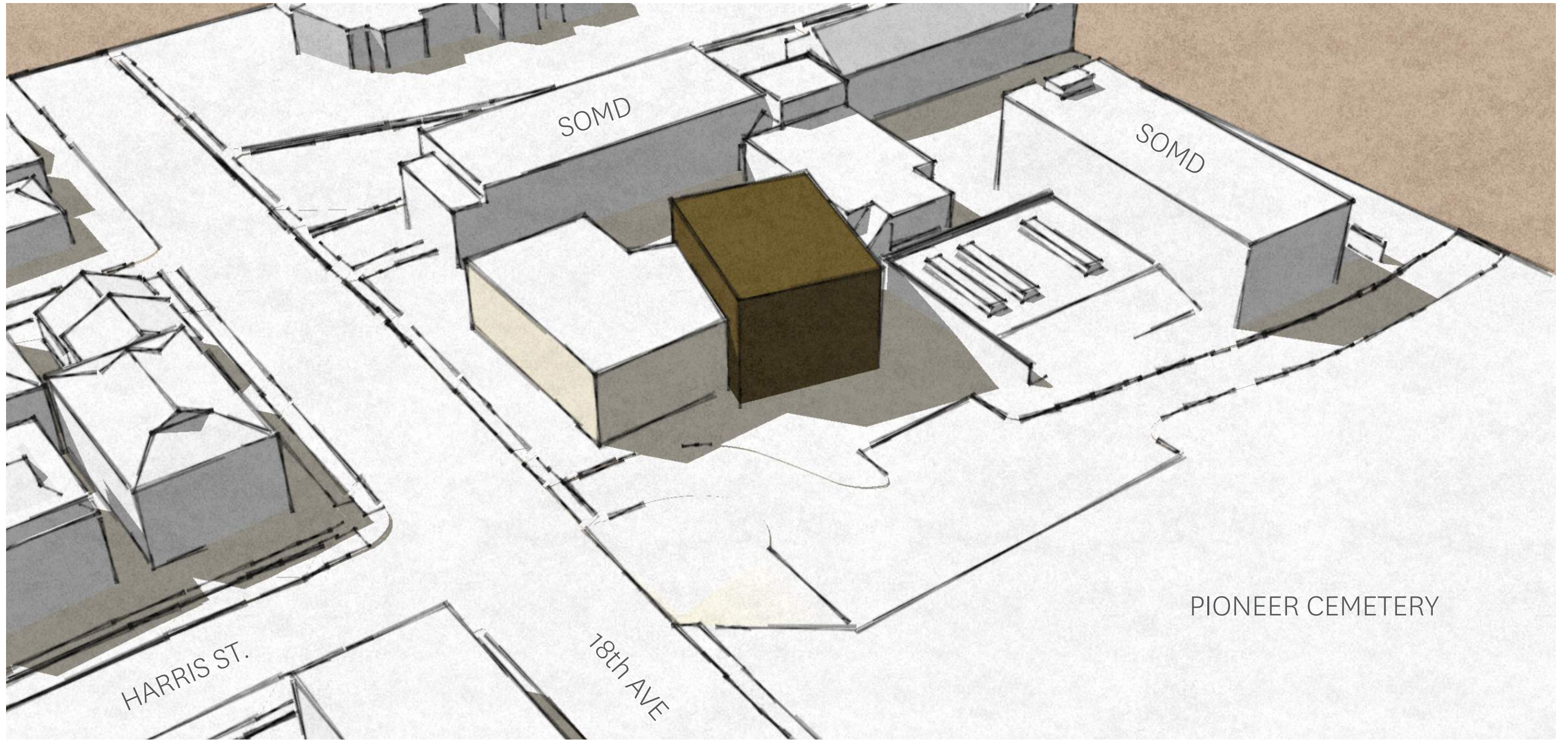


SCHOOL OF MUSIC AND DANCE



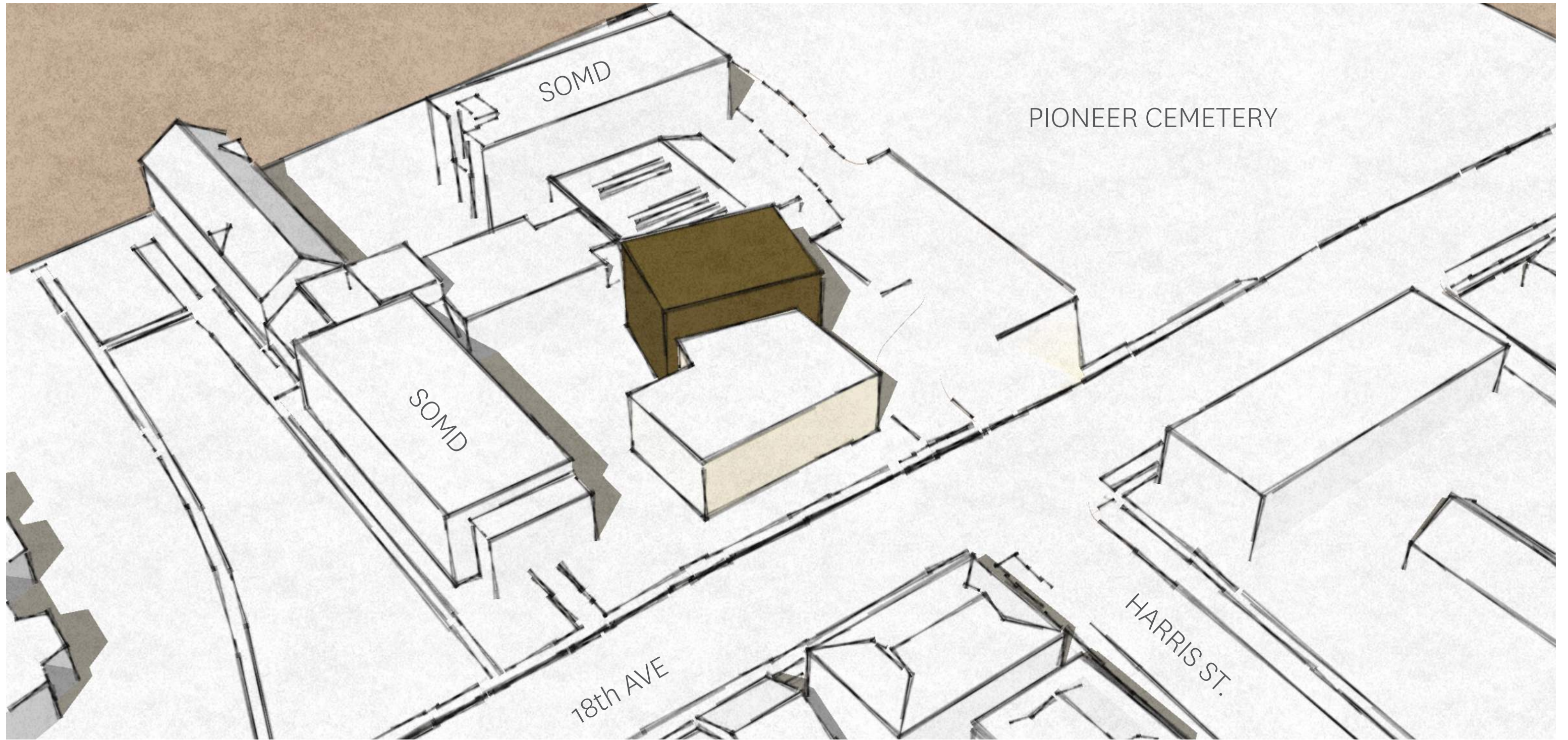
- existing tree to remain
- existing tree to be removed





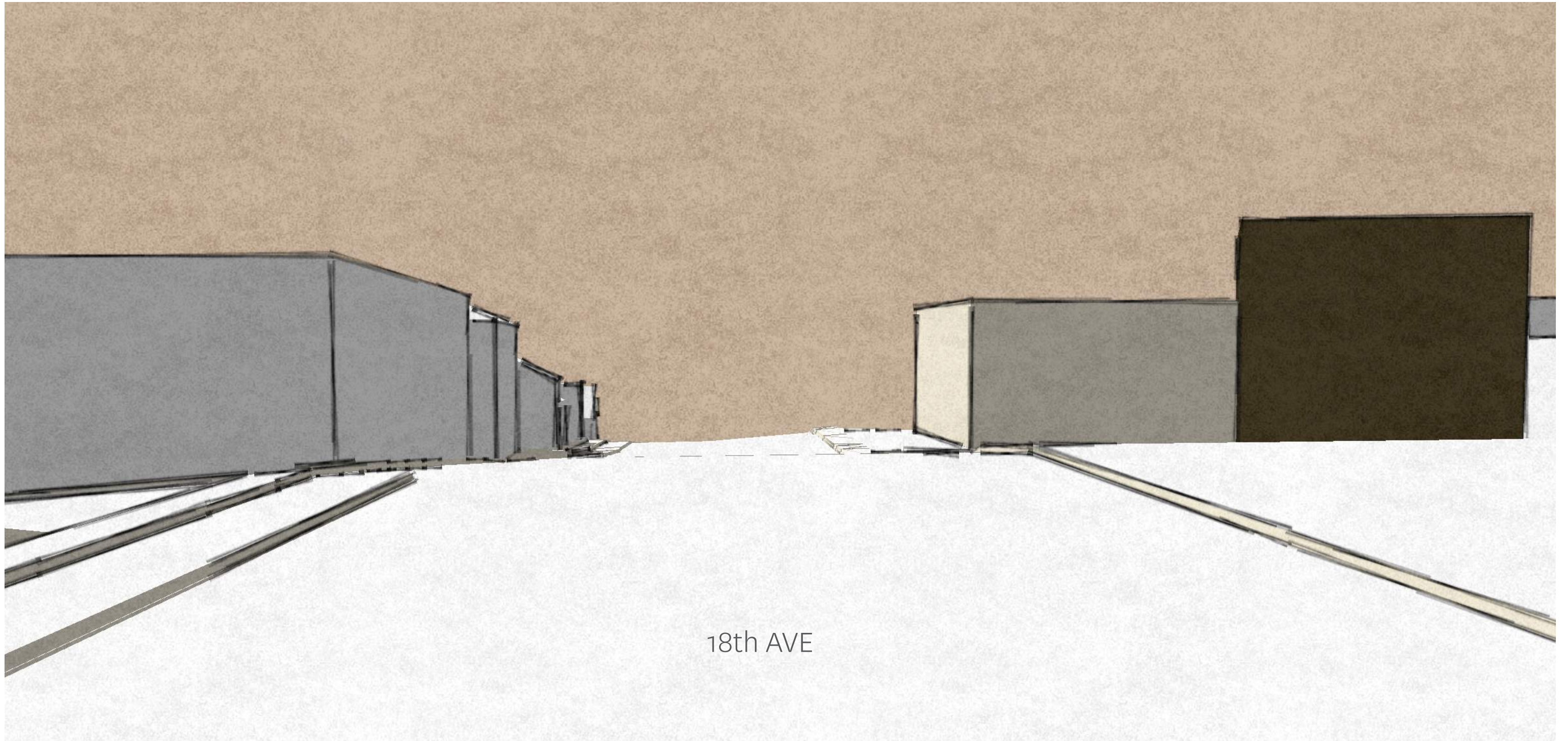
AERIAL LOOKING NORTH - WEST





AERIAL LOOKING NORTH - EAST

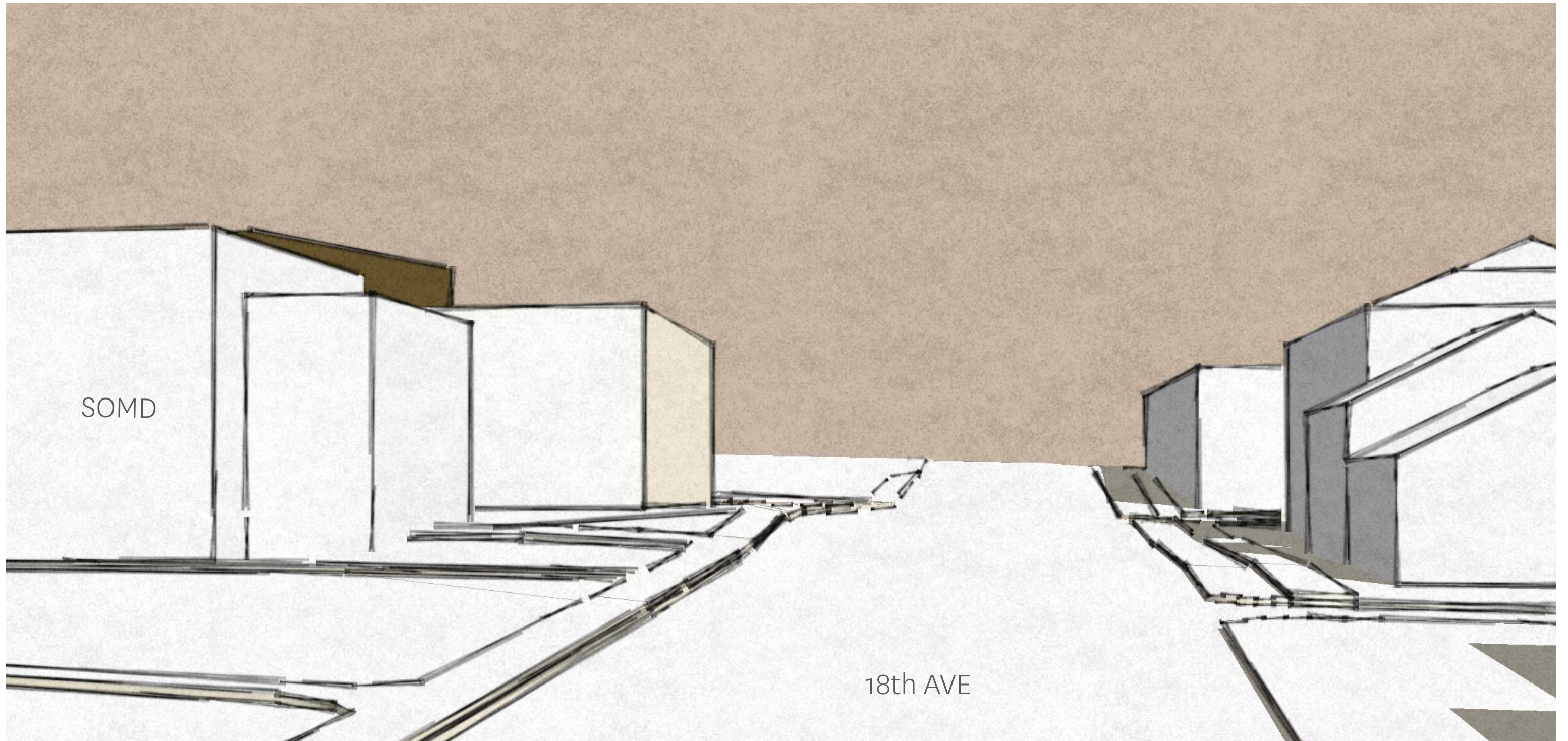




18th AVE

LOOKING WEST ON 18th AVE



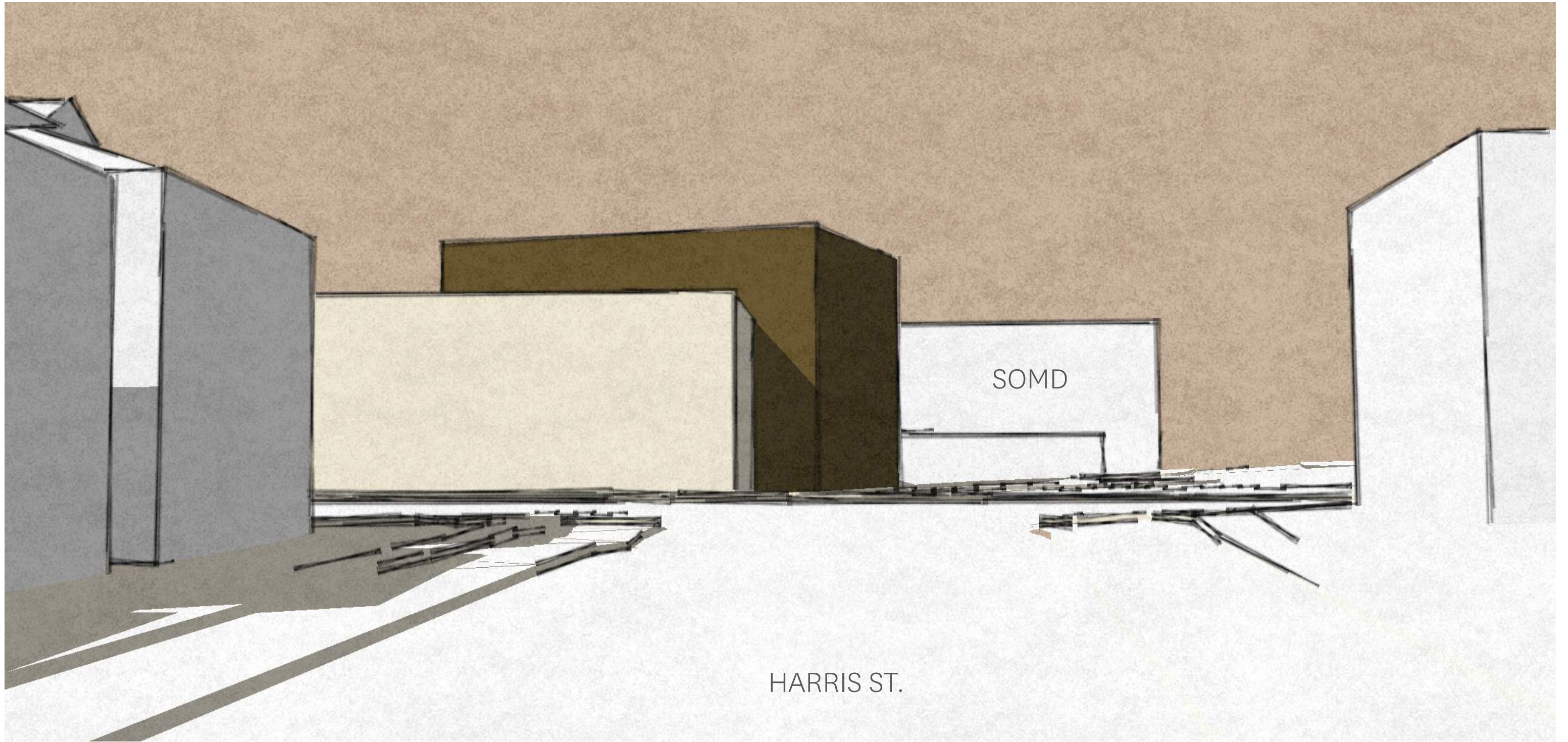


SOMD

18th AVE

LOOKING EAST ON 18th AVE





HARRIS ST.

LOOKING NORTH ON HARRIS

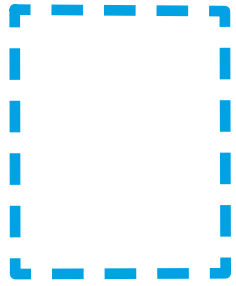




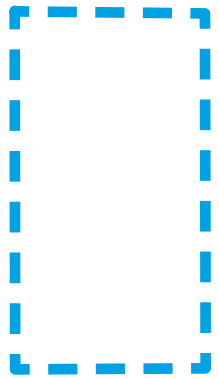




OBF



SOMD



HEDCO









